

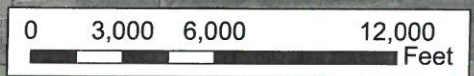
Polk County Ditch 9

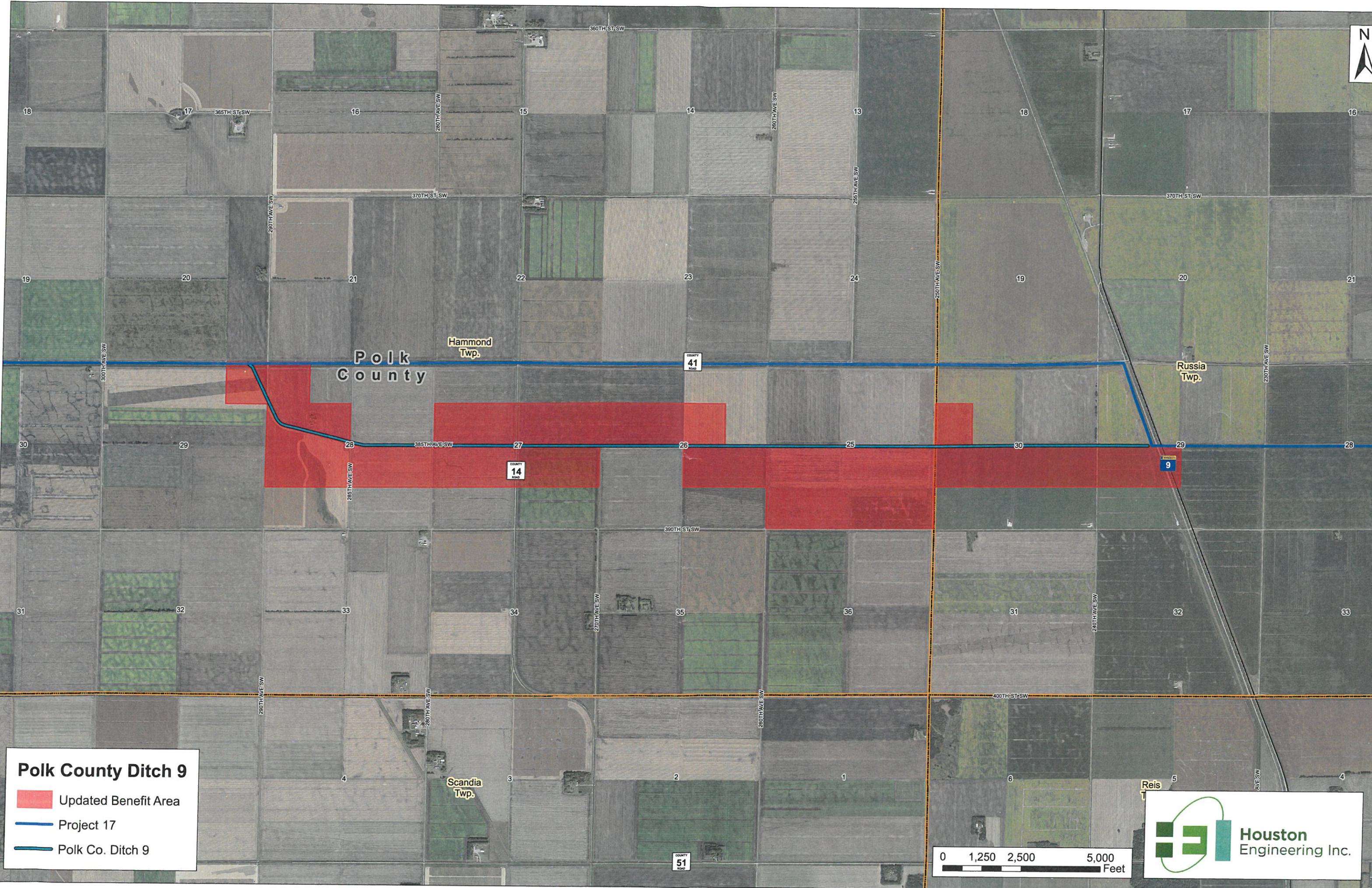
- CD 9 Benefit
- Updated Benefit Area
- Project 17
- Polk Co. Ditch 9

Approximate Existing Benefit Ratio

- 0.25
- 0.5
- 0.75
- 1

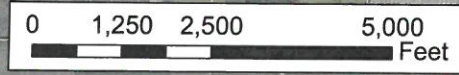
H:\Farop\BNI\600181216_1812_054GIS\CD 9 and 119 Updated Benefit Maps.mxd





Polk County Ditch 9

- Updated Benefit Area
- Project 17
- Polk Co. Ditch 9



H:\Farm\IBN\1800\1812\16_1812_0541GIS\CD 9 and 119 Updated Benefit Maps.mxd